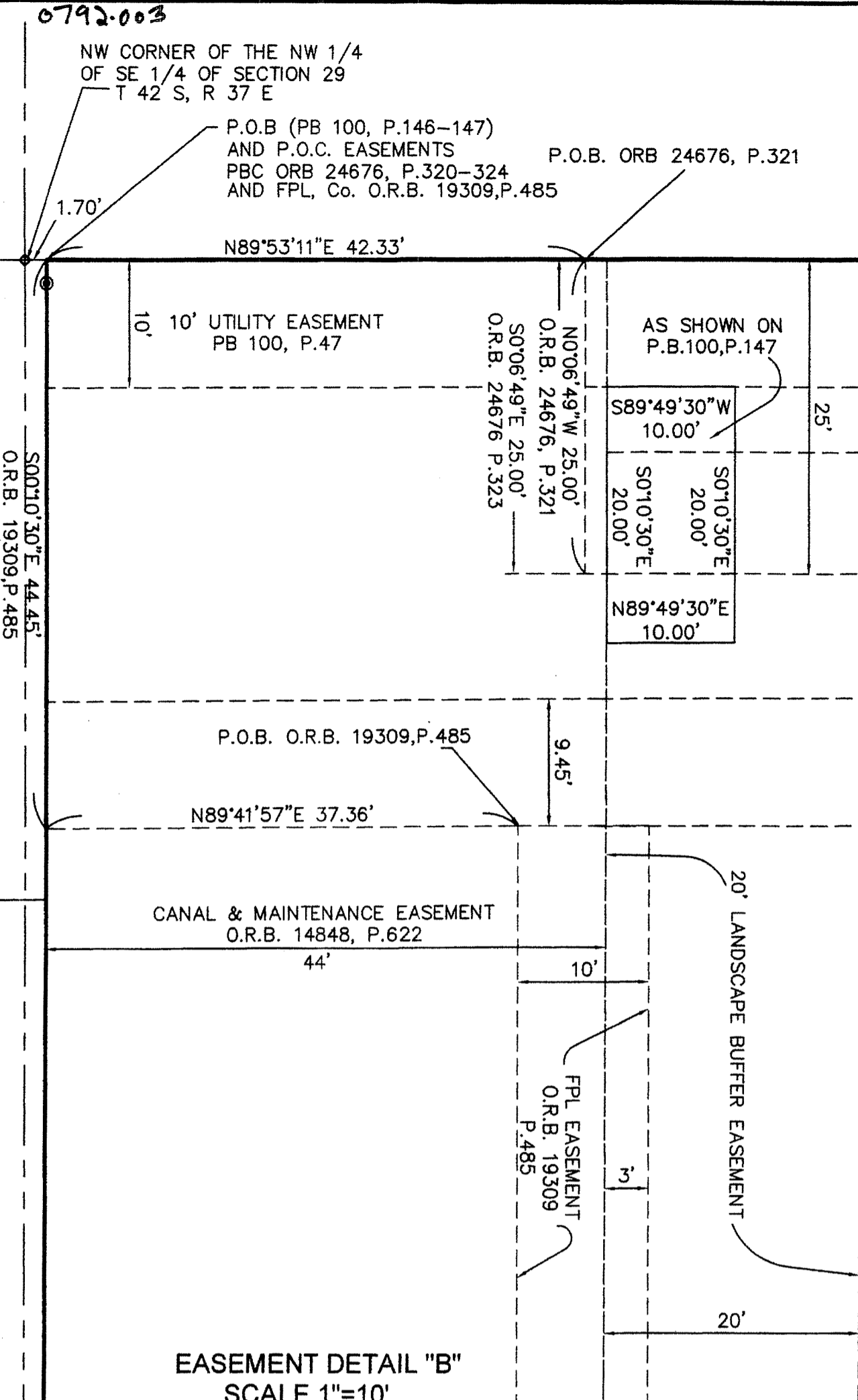


STATE OF FLORIDA
COUNTY OF PALM BEACH
THIS PLAT WAS FILED FOR
RECORD AT
THIS DAY OF
..... AND DULY RECORDED IN
PLAT BOOK No.
ON PAGES

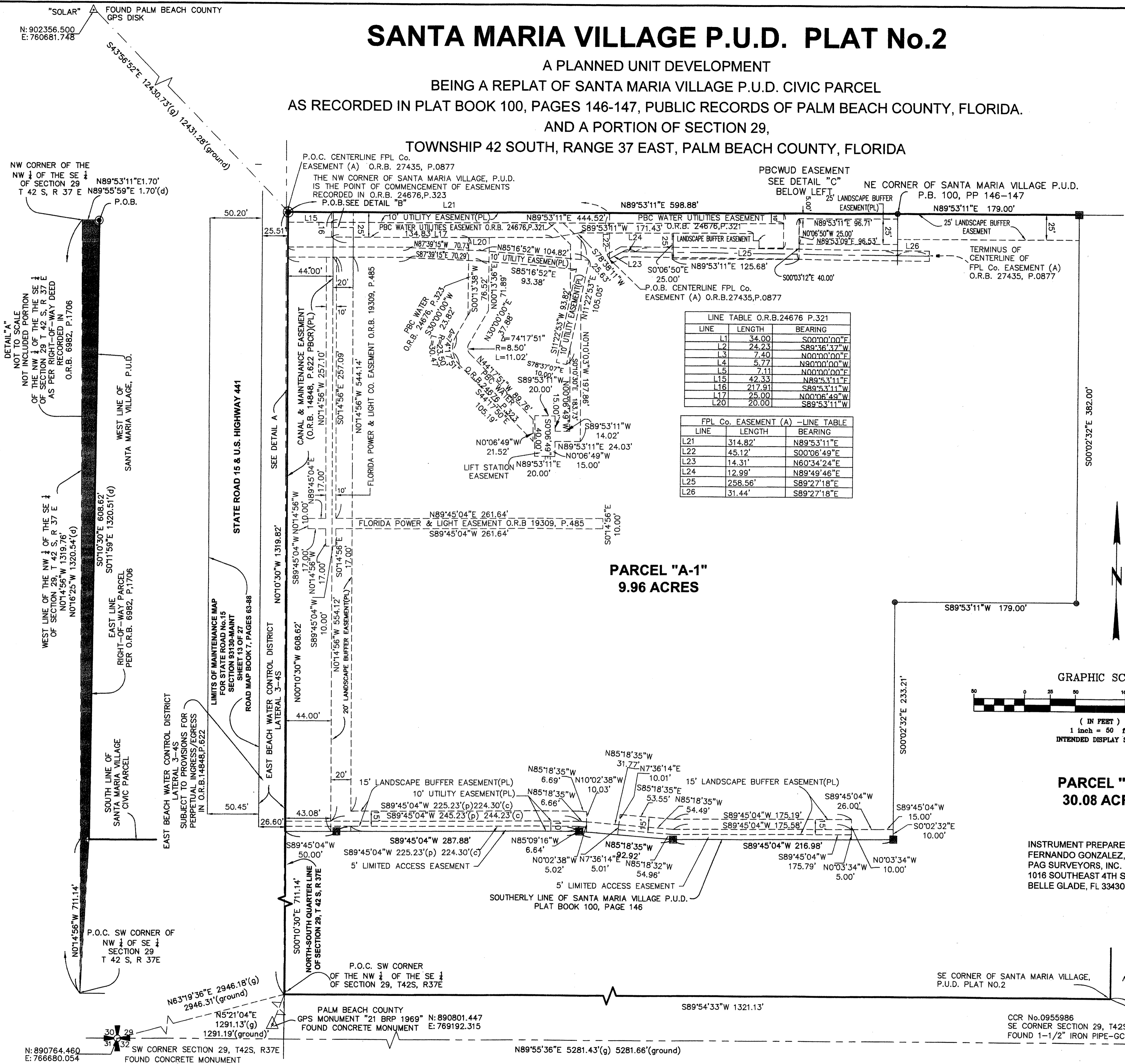
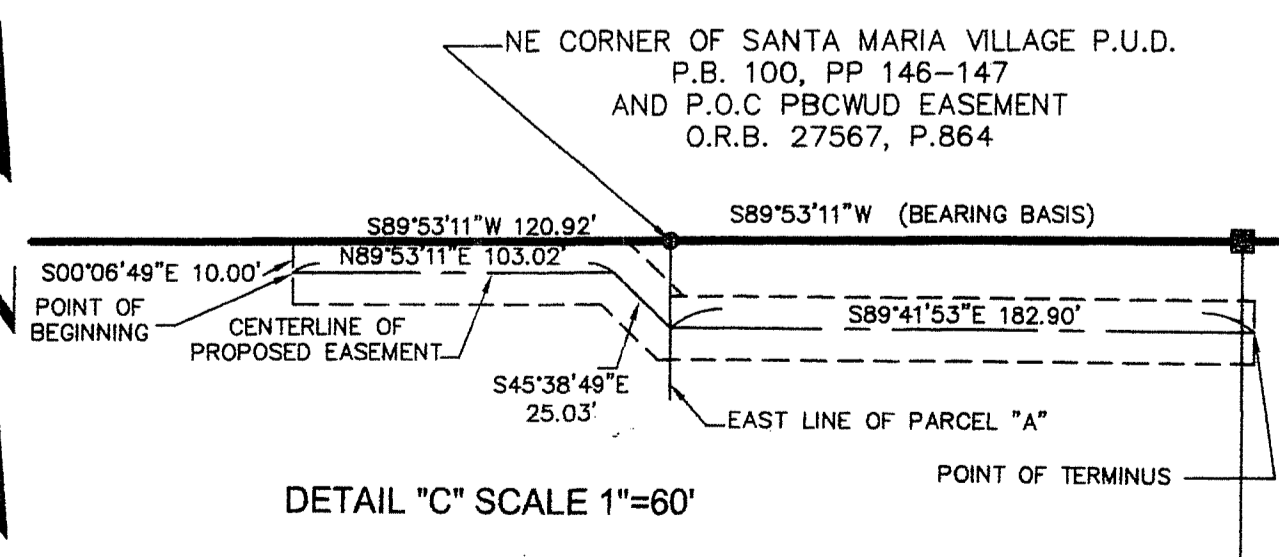
SHARON R. BOCK
CLERK AND COMPTROLLER
BY
DEPUTY CLERK

SANTA MARIA VILLAGE P.U.D. PLAT No.2

A PLANNED UNIT DEVELOPMENT
BEING A REPLAT OF SANTA MARIA VILLAGE P.U.D. CIVIC PARCEL
AS RECORDED IN PLAT BOOK 100, PAGES 146-147, PUBLIC RECORDS OF PALM BEACH COUNTY, FLORIDA.
AND A PORTION OF SECTION 29,
TOWNSHIP 42 SOUTH, RANGE 37 EAST, PALM BEACH COUNTY, FLORIDA



- LEGEND**
- (c) INDICATES COMPUTED
 - (d) INDICATES DESCRIPTION
 - (g) INDICATES GRID BEARING AND/OR DISTANCE
 - (m) INDICATES MEASURED
 - (p) INDICATES PLAT
 - (PL) EASEMENTS PER PB 100, P. 146
 - BM INDICATES BENCH MARK
 - C M INDICATES CONCRETE MONUMENT
 - O/S INDICATES OFFSET
 - P.R.M. INDICATES PERMANENT REFERENCE MONUMENT
 - R/W INDICATES RIGHT-OF-WAY
 - ROW INDICATES RIGHT-OF-WAY
 - T INDICATES TOWNSHIP
 - R INDICATES RANGE
 - P.B INDICATES PLAT BOOK
 - P. INDICATES PAGE
 - O.R.B. INDICATES OFFICIAL RECORD BOOK
 - P.O.B INDICATES POINT OF BEGINNING
 - P.O.C INDICATES POINT OF COMMENCEMENT
 - ⊙ INDICATES CENTERLINE
 - INDICATES 4"x4" SET PRM CONCRETE MONUMENT WITH ALUMINUM CAP STAMPED LB 3411
 - INDICATES SET 3/8" IRON ROD WITH CAP STAMPED LB 3411
 - INDICATES SET ALUMINUM CAP STAMPED PRM LB 3411, IN CONCRETE CURB FOR NORTHWEST CORNER.
 - ◆ INDICATES FOUND 3/8" IRON ROD WITH CAP STAMPED RPB
 - ⊙ INDICATES SECTION CENTER
 - PBCWUD INDICATES PALM BEACH COUNTY WATER UTILITIES DEPARTMENT

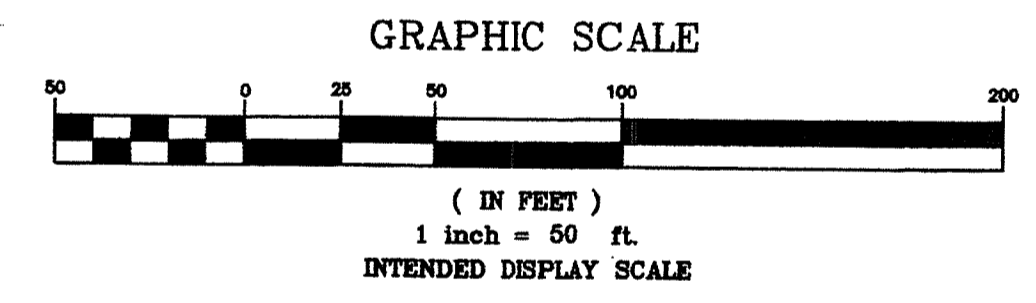


LINE TABLE O.R.B. 24676 P.321

LINE	LENGTH	BEARING
L1	34.00	S00°00'00"E
L2	24.23	S89°36'37"W
L3	7.40	N00°00'00"E
L4	5.77	N00°00'00"W
L5	7.11	N00°00'00"E
L15	42.33	N89°53'11"E
L16	217.91	S89°53'11"W
L17	25.00	N00°06'49"W
L20	20.00	S89°53'11"W

FPL Co. EASEMENT (A) - LINE TABLE

LINE	LENGTH	BEARING
L21	314.82'	N89°53'11"E
L22	45.12'	S00°06'49"E
L23	14.31'	N60°34'24"E
L24	12.99'	N89°49'46"E
L25	258.56'	S89°27'18"E
L26	31.44'	S89°27'18"E



PARCEL "B-1"
30.08 ACRES
INSTRUMENT PREPARED BY
FERNANDO GONZALEZ, P.S.M. FLORIDA LICENSE No.4994
PAG SURVEYORS, INC. LB 3411
1016 SOUTHEAST 4TH STREET
BELLE GLADE, FL 33430-4330